



A complete range of slew drives suitably rated for excavator duty, class 1,5 through 35 ton.  
Torque capacity up to 20.000 Nm

**KYB axial piston hydraulic motors feature:**

- swash plate
- double shockless cross relief valves
- anti-cavitation valves
- anti swing-back valve
- hydraulically operated negative parking brake
- brake retarder device

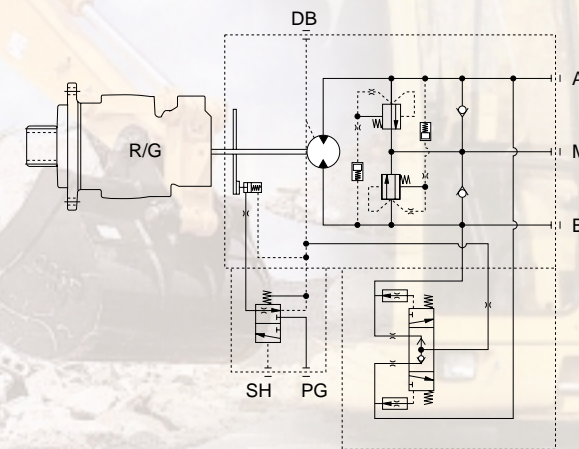
**Planetary drives feature:**

- 1 or 2 reductions
- wide choice of gear ratios
- output pinion shaft runs on wide span, heavy duty bearings
- customised pinion shaft on request
- generously proportioned mounting flange
- motor and gearbox share same lubrication for the low product range (mini-excavators).
- Independent lubrication for larger frame sizes.
- compact design
- facilitated installation on board of any machine
- absolute dependability
- smooth, quite operation.

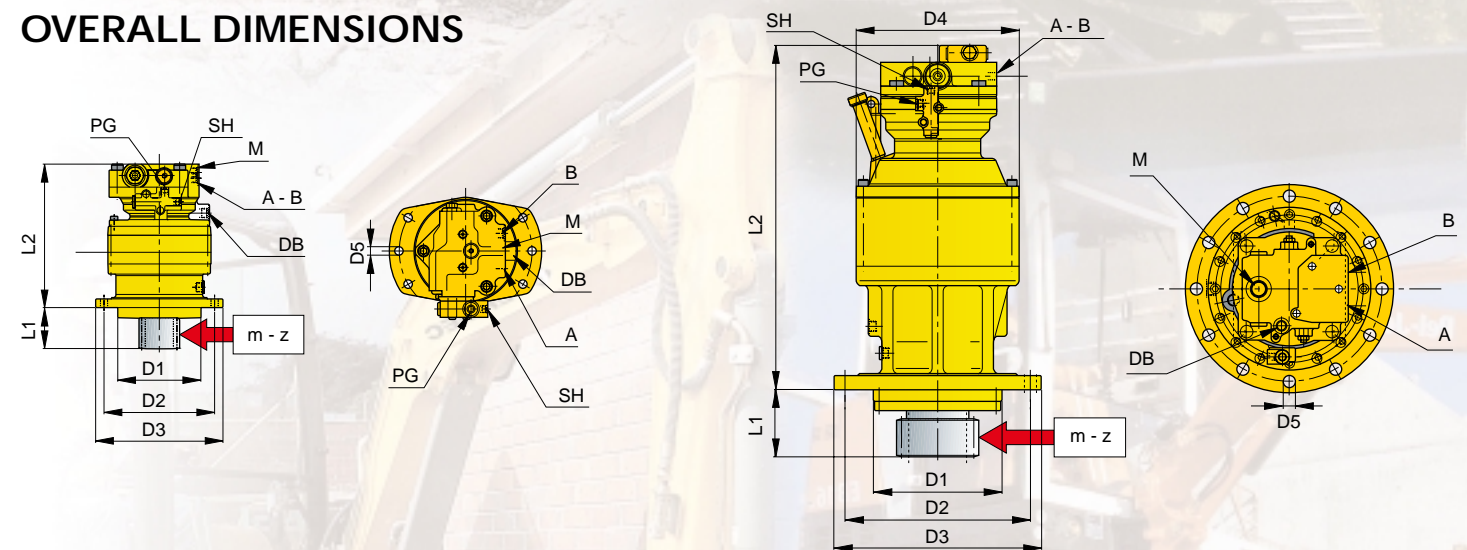
**SLEW DRIVES, TYPE: 700TK - TECHNICAL DATA**

Gearbox	Max. torque	Motor displacement	Max. pressure	Max. flow	Parking brake		Ratio	Approx. weight of machine
					YES	NO		
Type	Nm	cm	bar	l/min	1:		ton	
700 T1 K - 27	750	27.40	210	15	•	•	8.2	1,5 - 2,5
701 T2 K - 27	1200	27.40	210	30	•	•	13,7-20,8	3 - 4
703 T2 K - 27	2000	27.40	210	45	•	•	14,8-35,6	5 - 6
705 T2 K - 44	4000	44.10	280	80	•	•	18-26,3	7 - 8
706 T2 K - 63	6000	62.90	340	120	•	•	15,3-33	9 - 10
706 T2 K - 85	7000	87.30	340	160	•	•	15,3-22,6	11 - 13
707 T2 K - 85	8500	87.30	340	160	•	•	14,7-22,3	15 - 18
709 T2 K - 150	10000	151.00	340	220	•	•	14,7-22,3	20 - 22
709 T2 K - 210	12000	210.00	340	220	•	•	t.b.d.	22 - 24
710 T2 K - 210	16000	210.00	340	220	•	•	t.b.d.	26 - 30
711 T2 K - 210	20000	210.00	340	220	•	•	t.b.d.	32 - 35

**HYDRAULIC SCHEME**



**OVERALL DIMENSIONS**



**DIMENSIONS**

Type	D1	D2	D3	D4	D5	L1	L2	A-B	DB	M	SH	PG	m	z
700 T1 K - 27		228	260	186	ø 13 n°6	76	221	MAIN PORT	DRAIN PORT	ANTICAVITATION PORT	SPOOL OPERATING PORT	BRAKE RELEASE PORT	Module / number of teeth of pinion	UPON REQUEST
701 T2 K - 27		228	260	186	ø 13 n°6	86	256							
703 T2 K - 27	175	245	272	244	ø 18 n°10	120	330							
705 T2 K - 44	175	245	272	244	ø 18 n°10	120	420							
706 T2 K - 63	230	332	372	292	ø 22 n°10	150	580							
706 T2 K - 85	230	332	372	292	ø 22 n°10	150	615							
707 T2 K - 85	270	360	410	348	ø 22 n°12	160	580							
709 T2 K - 150	270	360	410	348	ø 22 n°12	160	660							
709 T2 K - 210	270	360	410	348	ø 22 n°12	160	t.b.d.							
710 T2 K - 210	390	460	510	400	ø 22 n°12	160	t.b.d.							
711 T2 K - 210	370	470	520	430	ø 22 n°12	160	t.b.d.							